



[DCA HOME](#) | [ABOUT DCA](#) | [DCA PROGRAMS](#) | [CONTACT DCA](#)

[BCIS Home](#) | [Log In](#) | [User Registration](#) | [Hot Topics](#) | [Submit Surcharge](#) | [Stats & Facts](#) | [Publications](#) | [FBC Staff](#) | [BCIS Site Map](#) | [Links](#) | [Search](#)



Product Approval

USER: Public User

[Product Approval Menu](#) > [Product or Application Search](#) > [Application List](#) > **Application Detail**

- ▶ COMMUNITY PLANNING
- ▶ HOUSING & COMMUNITY DEVELOPMENT
- ▶ EMERGENCY MANAGEMENT
- ▶ OFFICE OF THE SECRETARY

<p>FL #</p> <p>Application Type</p> <p>Code Version</p> <p>Application Status</p> <p>Comments</p> <p>Archived</p> <p>Product Manufacturer Address/Phone/Email</p> <p>Authorized Signature</p> <p>Technical Representative Address/Phone/Email</p> <p>Quality Assurance Representative Address/Phone/Email</p>	<p>FL11569</p> <p>New</p> <p>2007</p> <p>Approved</p> <p><input type="checkbox"/></p> <p>Town and Country Industries, 400 West McNab Road Ft. Lauderdale, FL 33309 (954) 493-8551 tomj@tc-alum.com</p> <p>Tom Johnston tomj@tc-alum.com</p> <p>Thomas B. Johnston 400 west McNab Rd. Ft. Lauderdale, FL 33309 (954) 970-9999 tomj@tc-alum.com</p>
---	--

Category	Shutters	
Subcategory	Bahama	
Compliance Method	Evaluation Report from a Florida Registered Architect or a Licensed Florida Professional Engineer <input checked="" type="checkbox"/> Evaluation Report - Hardcopy Received	
Florida Engineer or Architect Name who developed the Evaluation Report	Vladimir John Knezevich	
Florida License	PE-10983	
Quality Assurance Entity	National Accreditation & Management Institute,	
Quality Assurance Contract Expiration Date	12/31/2009	
Validated By	ORLANDO L. BLANCO, P.E. <input checked="" type="checkbox"/> Validation Checklist - Hardcopy Received	
Certificate of Independence	FL11569_R0_COI_2008_Certificate_of_Independence-FBC-signed.pdf	
Referenced Standard and Year (of Standard)	<u>Standard</u>	<u>Year</u>
	ASTM E1886	2002
	ASTM E1996	2002
	ASTM E330	2002
Equivalence of Product Standards Certified By		
Sections from the Code		
Product Approval Method	Method 1 Option D	
Date Submitted	11/03/2008	
Date Validated	11/06/2008	

Date Pending FBC Approval

11/12/2008

Date Approved

12/10/2008

Summary of Products		
FL #	Model, Number or Name	Description
11569.1	FullView Bahama	Aluminum articulating Bahama Shutter
Limits of Use Approved for use in HVHZ: No Approved for use outside HVHZ: Yes Impact Resistant: Yes Design Pressure: +50/-50 Other:		Installation Instructions FL11569_R0_II_FBC_08-355_Bahama_Seal_081031a.pdf Verified By: Vladimir John Knezevich PE-10983 Created by Independent Third Party: Yes Evaluation Reports FL11569_R0_AE_FullView_Evaluation_Report_NHVHZ_signed.pdf Created by Independent Third Party: Yes

Back

Next

DCA Administration

*Department of Community Affairs
 Florida Building Code Online
 Codes and Standards
 2555 Shumard Oak Boulevard
 Tallahassee, Florida 32399-2100
 (850) 487-1824, Fax (850) 414-8436*

© 2000-2005 The State of Florida. All rights reserved. [Copyright and Disclaimer](#)

Product Approval Accepts:



BAHAMA SHUTTER

ANCHOR NOTE 1:

- CONNECTION IN MIN. 3.35 KSI CONCRETE:
- 1/4" ITW TAPCONS @ 12" O.C. WITH 1.75" MIN. EMBED. AND 2.50" MIN. EDGE DIST.
 - 1/4-20 M/F ELCO PANELMATE @ 12" O.C. WITH 1.75" MIN. EMBED. AND 2.50" MIN. EDGE DIST.
 - 1/4-20 ALL POINTS SOLID SET ANCHOR @ 12" O.C. WITH 0.875" MIN. EMBED. AND 2.00" MIN. EDGE DIST.
- CONNECTION IN HOLLOW CONCRETE BLOCK:
- 1/4" ITW TAPCONS @ 12" O.C. WITH 1.25" MIN. EMBED. AND 2.50" MIN. EDGE DIST.
 - 1/4-20 M/F ELCO PANELMATE @ 12" O.C. WITH 1.25" MIN. EMBED. AND 2.50" MIN. EDGE DIST.
 - 1/4-20 ALL POINTS SOLID SET ANCHOR @ 12" O.C. WITH 0.875" MIN. EMBED. AND 2.00" MIN. EDGE DIST.
- CONNECTION IN WOOD G=0.42 MIN:
- 1/4" LAG SCREW @ 12" O.C. WITH 1.50" MIN. EMBED. AND 0.75" MIN. EDGE DIST.
 - #14 SHEET METAL SCREW @ 12" O.C. WITH 1.50" MIN. EMBED. AND 0.75" MIN. EDGE DIST.

ANCHOR NOTE 2:

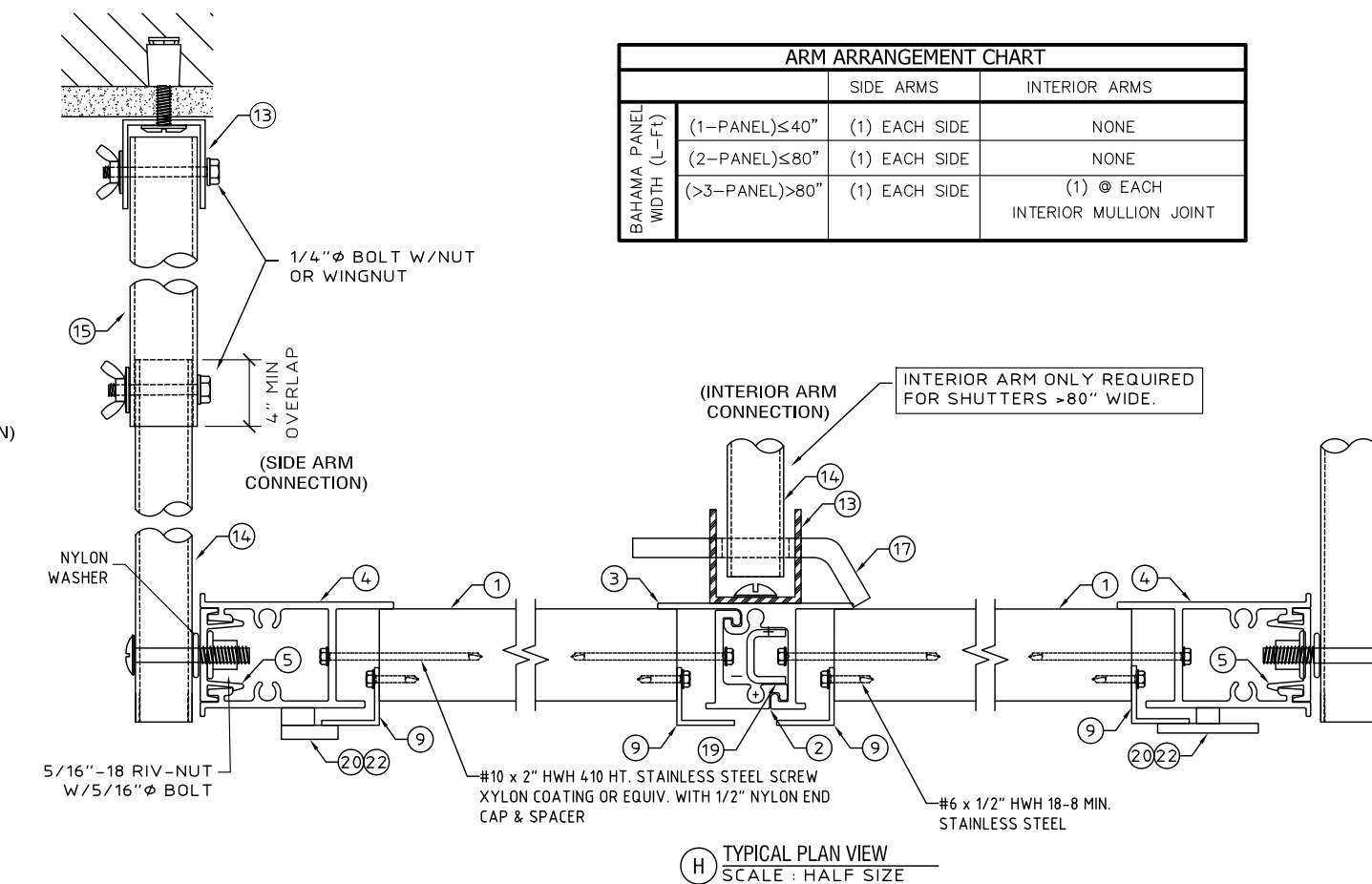
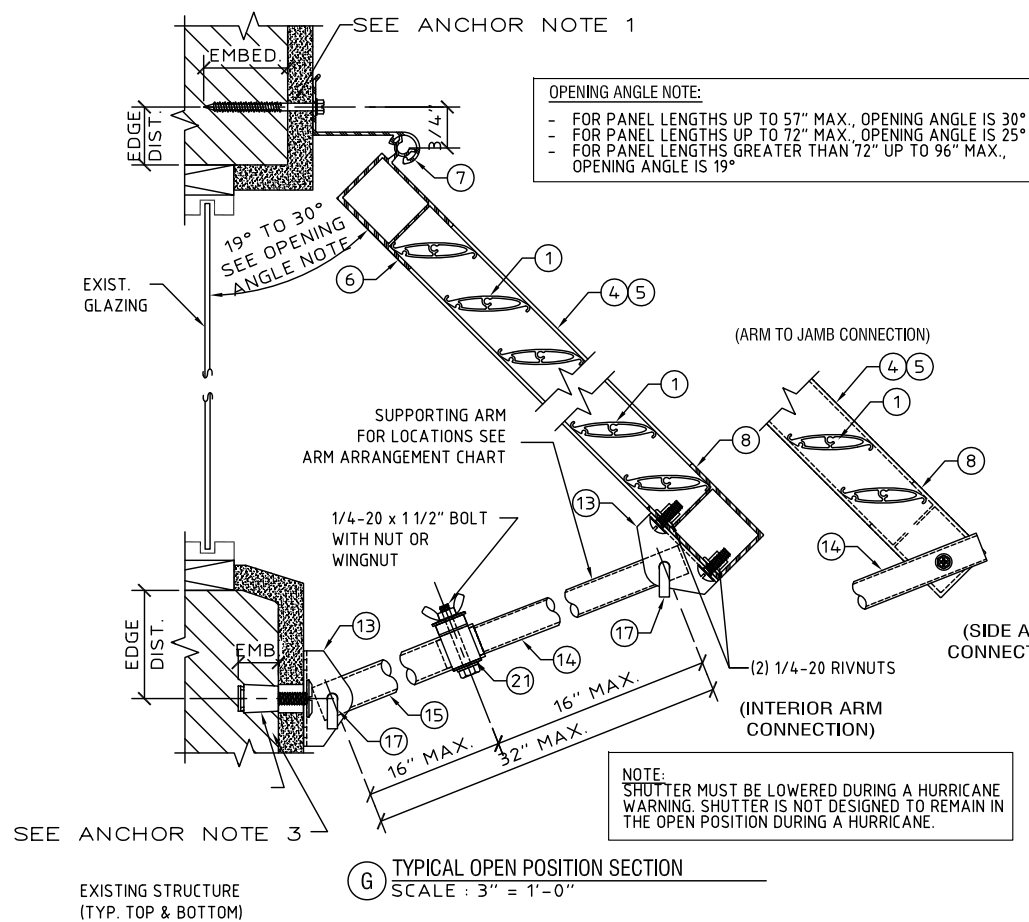
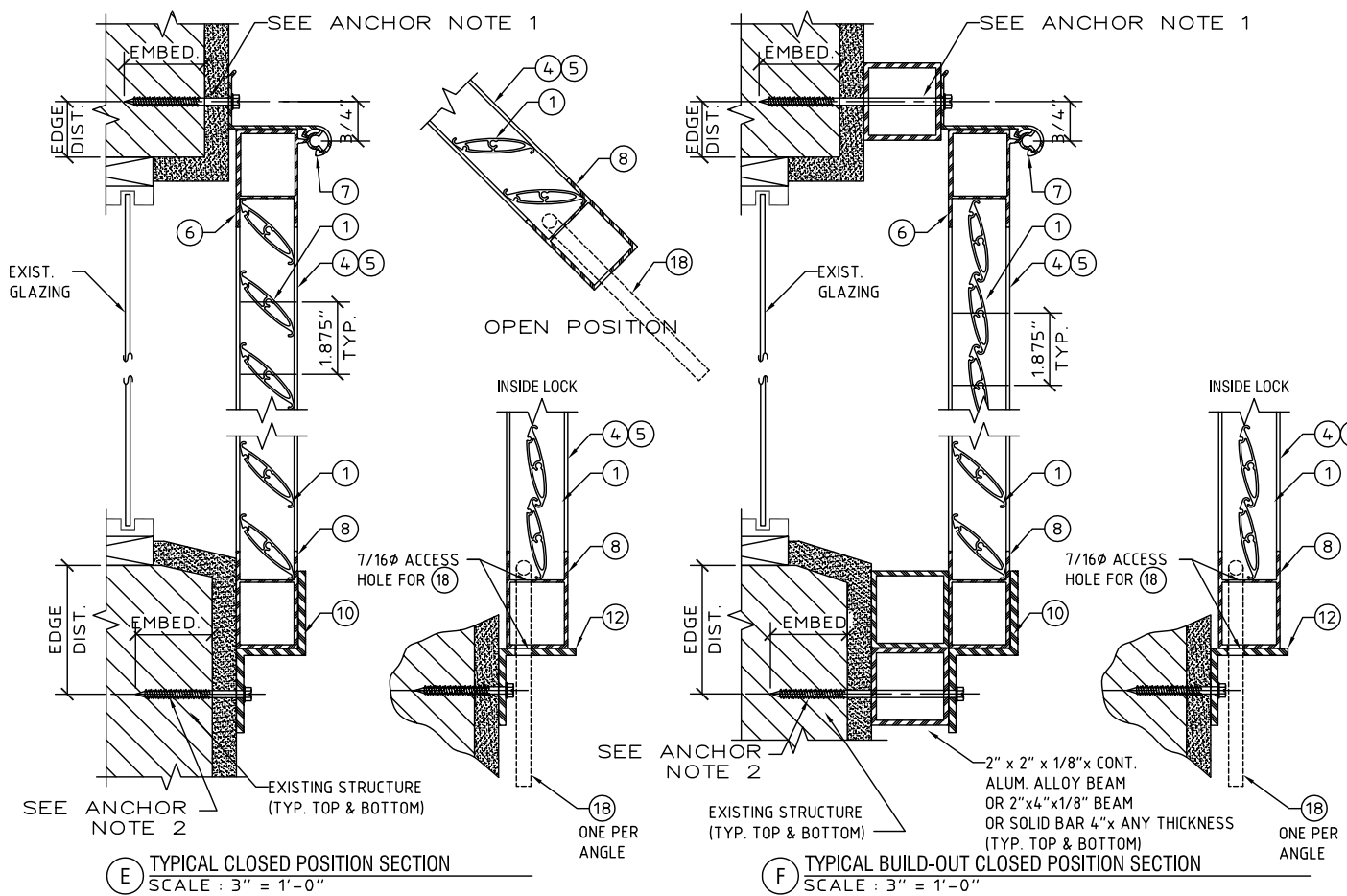
- CONNECTION IN MIN. 3.35 KSI CONCRETE:
- (3) 1/4" ITW TAPCONS WITH 1.75" MIN. EMBED. AND 2.50" MIN. EDGE DIST.
 - (3) 1/4-20 M/F ELCO PANELMATES WITH 1.75" MIN. EMBED. AND 2.50" MIN. EDGE DIST.
 - (3) 1/4-20 ALL POINTS SOLID SET ANCHORS WITH 0.875" MIN. EMBED. AND 2.00" MIN. EDGE DIST.
- CONNECTION IN HOLLOW CONCRETE BLOCK:
- (3) 1/4" ITW TAPCONS WITH 1.25" MIN. EMBED. AND 2.50" MIN. EDGE DIST.
 - (3) 1/4-20 M/F ELCO PANELMATES WITH 1.25" MIN. EMBED. AND 2.00" MIN. EDGE DIST.
 - (3) 1/4-20 ALL POINTS SOLID SET ANCHORS WITH 0.875" MIN. EMBED. AND 2.00" MIN. EDGE DIST.
- CONNECTION IN WOOD G=0.42 MIN:
- (3)-1/4" ELCO MALE / FEMALE "PANELMATE" WITH 1.875" MIN. EMBED. AND 0.75" MIN. EDGE DIST.
 - (3)-1/4" ITW TAPCON SG WITH 1.50" MIN. EMBED. AND 0.75" MIN. EDGE DIST.
 - (3)-1/4" STAINLESS STEEL HANGER BOLT WITH 1.25" MIN. EMBED. AND 0.75" MIN. EDGE DIST.

ANCHOR NOTE 3:

- CONNECTION IN MIN. 3.295 KSI CONCRETE:
- (1) 1/4" ITW TAPCON WITH 1.75" MIN. EMBED. AND 2.50" MIN. EDGE DIST.
 - (1) 1/4" ALL POINTS SOLID SET WITH 0.875" MIN. EMBEDMENT AND 3.00" MIN. EDGE DIST.
- CONNECTION IN HOLLOW CONCRETE BLOCK:
- (2) 1/4" ELCO ULTRACONS WITH 1.25" EMBEDMENT AND 2.50" MIN. EDGE DIST.
- CONNECTION IN WOOD G=0.42 MIN:
- (1)-1/4" LAG SCREW WITH 1.75" MIN. EMBED. AND 0.75" MIN. EDGE DIST.
 - (1)-#14 SHEET METAL SCREW WITH 1.50" MIN. EMBED. AND 0.75" MIN. EDGE DIST.

NOTE

SOUTHERN YELLOW PINE, G=0.55
 SPRUCE-PINE-FIR (SPF), G=0.42



This seal was authorized by V.J. Knezevich, PE 10983, dated Oct 15, 2008. This does not constitute an electronic signature. Original, signed & sealed hard copies to the appropriate agency will follow.

KNEZEVICH ASSOCIATES
 Consulting Engineers
 2590 S.W. 105th Terrace, Davie, Florida 33324
 (954) 821-6933 * F (954) 452-7960 * COA 27989
 website: www.knezevich.com email: vk@knezevich.com

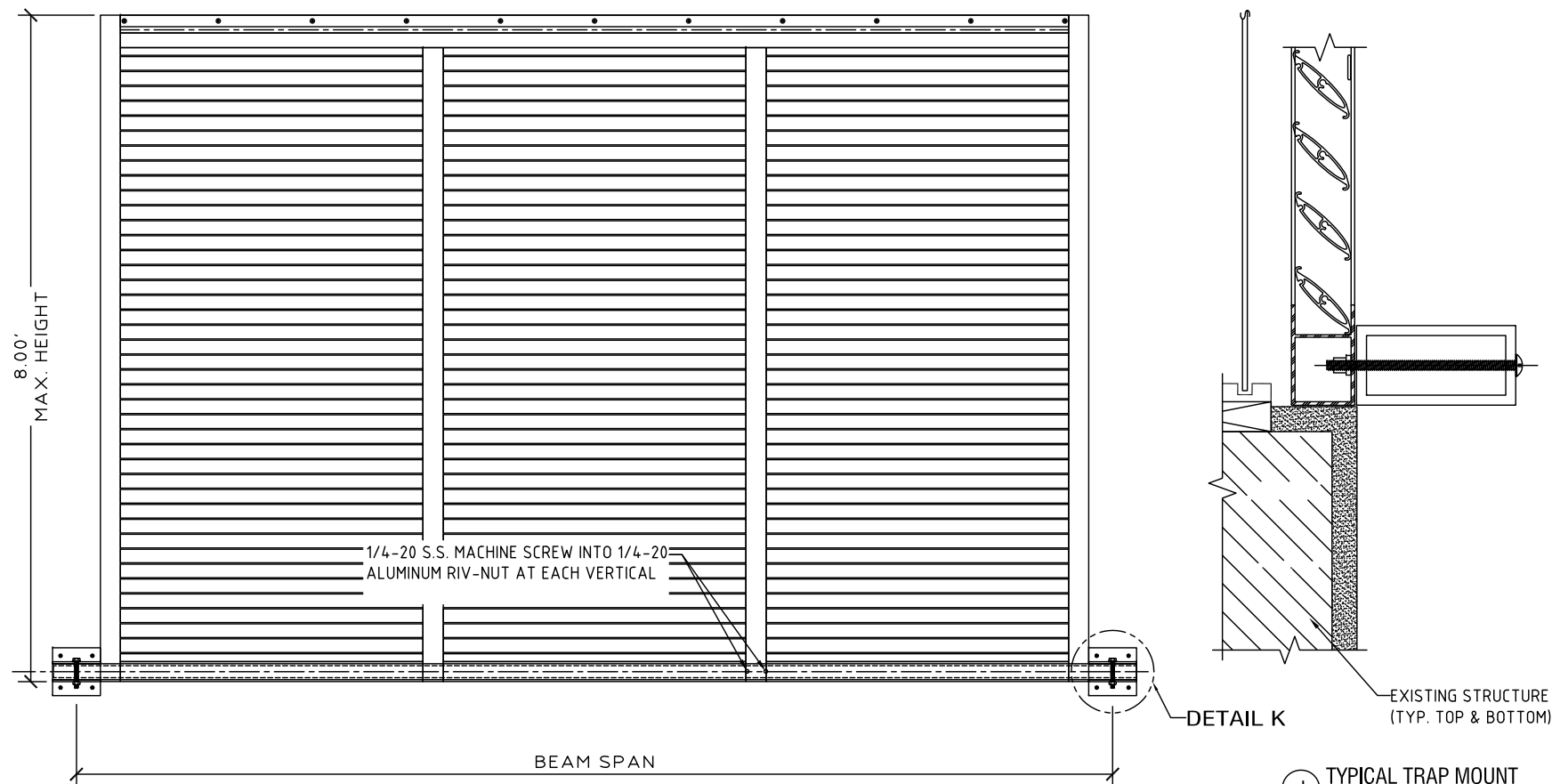
Town & Country INDUSTRIES
 Wholesale Aluminum and Building Products
 400 WEST McNAB ROAD
 FORT LAUDERDALE, FL 33309
 PHONE 954-970-9999 FAX 954-970-9988

revisions	
no	description

V.J. Knezevich
 Professional Engineer
 FL License No. PE 10983
 FLORIDA COA No. 27989

Oct 15, 2008
 drawn by: [signature]
 date: 10/15/2008
 project no. 08-355

BAHAMA SHUTTER



I TYPICAL ELEVATION WITH ANGLE @ SILL
SCALE: 1/2" = 1'-0"

BEAM SIZE	ALUMINUM ALLOY	SHUTTER SPAN FT.-IN.	BEAM SPAN FT.-IN.	WALL BRACKET ANCHOR TYPES		
				CONCRETE	NORMAL WEIGHT HOLLOW CONCRETE BLOCK	WOOD
2"X3"X.125"	6063-T6	8 - 0	6 - 0	A, B, C	A, B, C	B, C
		6 - 8	6 - 4	A, B, C	A, B, C	B, C
		5 - 10	6 - 8	A, B, C	A, B, C	B, C
2"X4"X.125"	6063-T6	8 - 0	7 - 7 3/4	A, B, C	A, B, C	B, C
		6 - 8	8 - 1 1/2	A, B, C	A, B, C	B, C
		5 - 10	8 - 5 3/4	A, B, C	A, B, C	B, C
2"X5"X.125"	6063-T6	8 - 0	9 - 2 1/2	A, B, C	A, B, C	B, C
		6 - 8	9 - 9 3/8	A, B, C	A, B, C	B, C
		5 - 10	10 - 2 3/4	A, B, C	A, B, C	B, C
2"X4"X.25"	6061-T6	8 - 0	9 - 3 1/4	A, B, C	A, B, C	B, C
		6 - 8	9 - 10 1/8	A, B, C	A, B, C	B, C
		5 - 10	10 - 3 1/2	A, B, C	A, B, C	B, C

ANCHOR TYPES (FOUR REQUIRED AT EACH END OF BEAM)

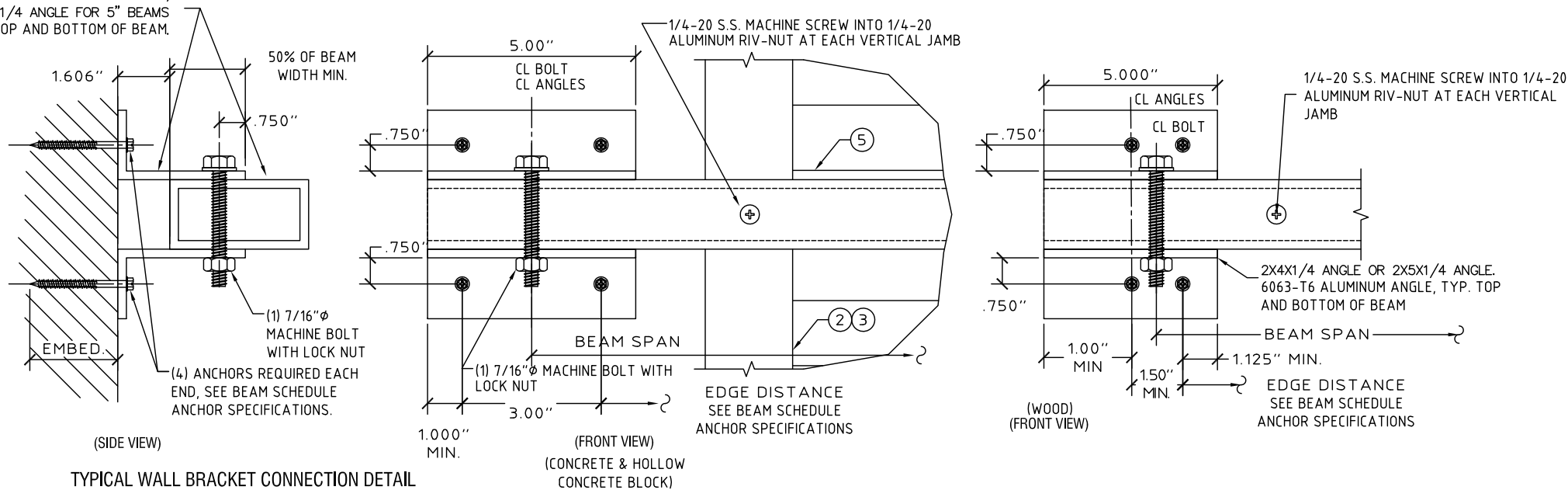
A 1/4-20X1 ALL POINTS ANCHOR SOLID SET
3.0 KSI CONCRETE: 7/8" MIN. EMBEDMENT WITH 3" MIN. EDGE DISTANCE AND 3" MIN. SPACING
HOLLOW CONCRETE BLOCK: 7/8" MIN. EMBEDMENT WITH 3" MIN. EDGE DISTANCE AND 3" MIN SPACING

B 1/4" ELCO CONSTRUCTION PRODUCTS MALE/FEMALE PANELMATE WITH 1/4-20 MACHINE SCREW OR NUT
3.35 KSI CONCRETE: 2" MIN. EMBEDMENT WITH 2.5" MIN. EDGE DISTANCE AND 3" MIN. SPACING
HOLLOW CONCRETE BLOCK: 1 1/4" MIN. EMBEDMENT WITH 2" MIN. EDGE DISTANCE AND 3" MIN. SPACING
WOOD (G=0.54 MIN): 1 7/8" MIN. EMBEDMENT WITH 3/4" MIN. EDGE DISTANCE AND 1 1/2" MIN. SPACING

C 1/4" ITW TAPCON SG
3.295 KSI CONCRETE: 1 3/4" MIN. EMBEDMENT WITH 2 1/2" MIN. EDGE DISTANCE AND 3" MIN. SPACING
HOLLOW CONCRETE BLOCK: 1 1/4" MIN. EMBEDMENT WITH 2 1/2" MIN. EDGE DISTANCE AND 3" MIN. SPACING
WOOD (G=0.53 MIN): 1 1/2" MIN. EMBEDMENT WITH 3/4" MIN. EDGE DISTANCE AND 1 1/2" MIN. SPACING

J TYPICAL TRAP MOUNT
SCALE: 3" = 1'-0"

USE 2X4X1/4 ANGLE FOR 3" & 4" BEAMS,
USE 2X5X1/4 ANGLE FOR 5" BEAMS
, TYP. TOP AND BOTTOM OF BEAM



TYPICAL WALL BRACKET CONNECTION DETAIL
SCALE: 3" = 1'-0"



KNEZEVICH ASSOCIATES

Consulting Engineers
2590 S.W. 105th Terrace * Davie, Florida 33324
(954) 821-6933 * F (954) 452-7960 * COA 27989
website: www.knezevich.com * email: vk@knezevich.com

Copyright ©2008 V.Knezevich & Associates, LLC d/b/a Knezevich Associates

Town & Country INDUSTRIES
Wholesale Aluminum and Building Products
400 WEST MCNAB ROAD
FORT LAUDERDALE, FL 33309
PHONE 954-970-9999 FAX 954-970-9988

This seal was authorized by V. J. Knezevich, PE 10983, dated Oct 15, 2008. This does not constitute an electronic signature. Original, signed & sealed hard copies to the appropriate agency will follow.

no	date	by	description

V. J. Knezevich
Professional Engineer
License No. PE 1010983
FLORIDA COA No.: 27989



Drawn by: [signature]
Title: 10/15/2008
Project no. 08-355